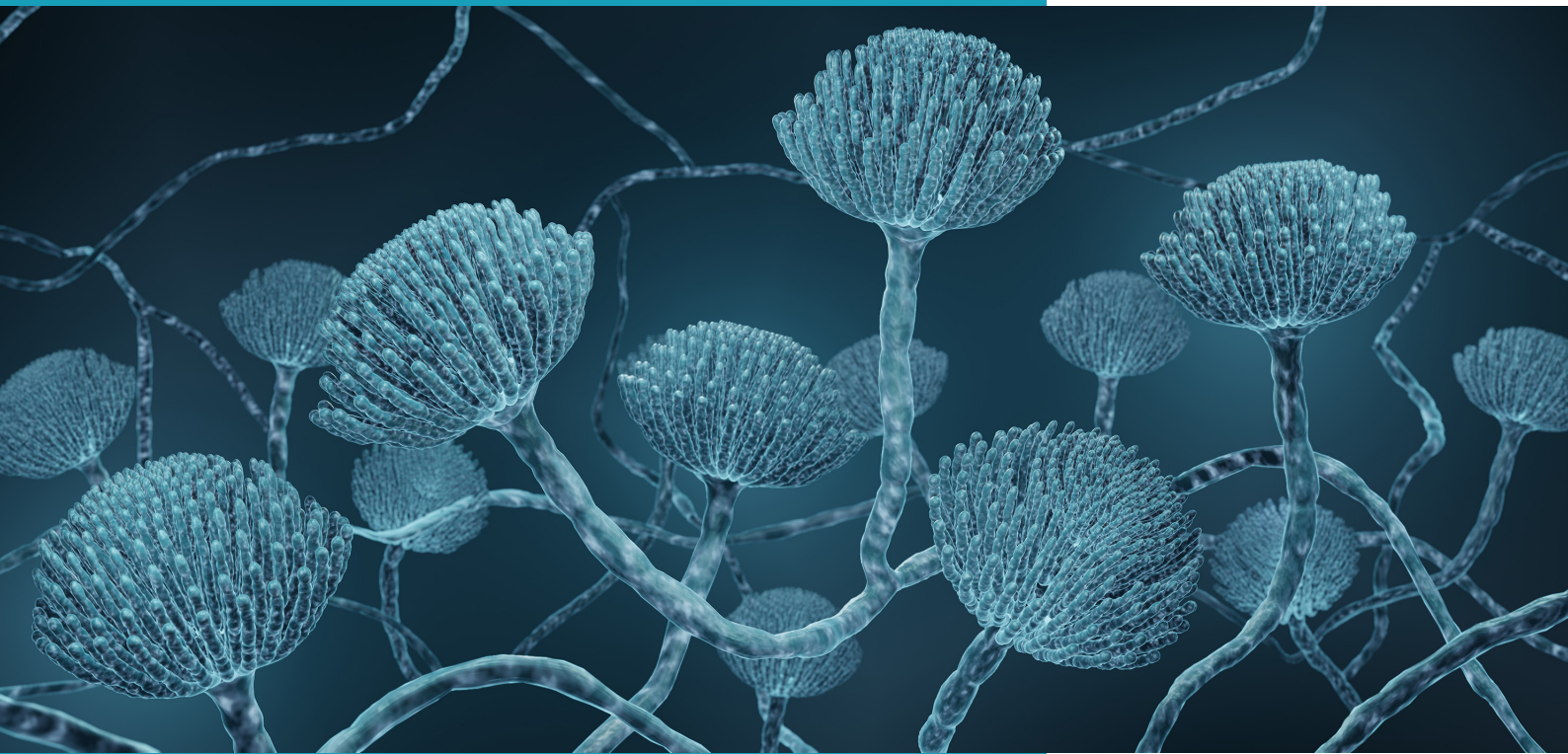


REALQUALITY Aspergillus

Real-Time PCR kit for the detection and the simultaneous identification of *Aspergillus fumigatus*, *Aspergillus terreus* and *Aspergillus spp.*



The test can be automated on the GENEQUALITY® X120 and GENEQUALITY® Max platforms. The automation includes the extraction protocol, PCR set-up and amplification with sample tracking. The test can be integrated with the laboratory LIMS and minimal operator intervention.

For in vitro diagnostic use

REALQUALITY Aspergillus

The genus *Aspergillus* comprises filamentous fungi commonly found in various environments, both outdoors and indoors. Among the over 250 known species of *Aspergillus*, fewer than 40 are of clinical interest. The primary route of infection in humans occurs through the inhalation of spores produced by the fungus. Allergic bronchopulmonary aspergillosis and chronic pulmonary aspergillosis are the most common infections caused by this pathogen, primarily affecting patients with asthma or cystic fibrosis. Invasive aspergillosis, which is less frequent, is found in immunocompromised patients and can lead to infections with high mortality and morbidity rates.

The main causative agent of aspergillosis is *A. fumigatus*. However, other *Aspergillus* species are emerging as pathogens, including *A. terreus*, which is particularly resistant to antifungals used in therapies against aspergillosis.

In clinical settings, for the diagnosis of invasive aspergillosis, Real-Time PCR is among the preferred methodologies because the reaction occurs in a completely closed system that avoids contamination and has reduced execution times.

REALQUALITY Aspergillus is a Real-Time PCR kit for the simultaneous identification of *A. fumigatus* and *A. terreus* and the detection of other main *Aspergillus* species of clinical relevance, providing rapid and reliable results without culture.

PRODUCT CHARACTERISTICS:

Fluorophores	Target
FAM	<i>Aspergillus fumigatus</i>
HEX	<i>Aspergillus terreus</i>
Cy5	<i>Aspergillus spp.</i>
ROX	Internal control (BG)

- **Internal control (IC)** based on amplification of the human β globin (BG) gene.
- Includes **dUTP/UNG** system to prevent carry over contamination.
- Requires **5 μ L** of extracted DNA.
- **70 minutes** for Real-Time PCR amplification.
- Validated on Real-Time thermal cyclers:
 - CFX96 Real-Time PCR Detection System-IVD (Bio-Rad)
 - AriaDx Real Time PCR System (Agilent Technologies)
 - Mic qPCR Cyclers (bio molecular system)
- Easy result interpretation with **AB Genius Report 3** software.
- Available in automatic format for **GENEQUALITY® X120** and **GENEQUALITY® Max**.

SPECIMENS:

Validated on:

- **plasma**
- **serum**
- **blood (treated with EDTA)**
- **nasopharyngeal swab**
- **bronchoalveolar lavage (BAL)**
- **liquor**

ORDERING INFORMATION:

CODE	PRODUCT	N° TESTS	FORMAT
RQ-171-4M	REALQUALITY Aspergillus	50	Manual
RQ-171-6M		100	
RQ-171-4A		50	For use on the GENEQUALITY® platforms
RQ-171-6A		100	



AB ANALITICA
ADVANCED BIOMEDICINE

AB ANALITICA srl Via Svizzera, 16 - 35127 Padova ITALY | P.IVA 02375470289
Tel. +39 049 761689 | Fax. +39 049 8709510 | www.abanalitica.com | info@abanalitica.it